

**Dimensions**

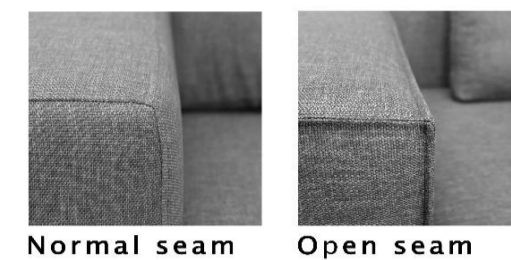
All indicated dimensions are approx. dimensions  
Width and depth see type plan

Height 83cm

Seat height 42cm

Possible finish:

Standard



Combination Nr. 1



---

Our furniture are hand-made. For this reason, are possible small differences in dimensions.  
Differences in shades of wood, cloth and leather, bending, hardness upholstery can not be the basis for complaint.

---

**Dimensions**

	<p><b>Typ Nr. SO03</b> <b>Sofa 3 – seat</b> 2 x decorative pillow 80 x 50cm 2 x decorative pillow 55 x 55cm</p>	260 x 95
	<p><b>Typ Nr. SO02</b> <b>Sofa 2 – seat</b> 4 x decorative pillow 55 x 55cm or 2 x decorative pillow 80 x 50cm</p>	190 x 95
	<p><b>Typ Nr. SO49</b> <b>Sofa 3–seat Arm right</b> 2 x decorative pillow 80 x 50cm 2 x decorative pillow 55 x 55cm</p>	250 x 95
	<p><b>Typ Nr. SO50</b> <b>Sofa 3–seat Arm left</b> 2 x decorative pillow 80 x 50cm 2 x decorative pillow 55 x 55cm</p>	250 x 95
	<p><b>Typ Nr. SO53</b> <b>Sofa 2–seat Arm right</b> 1 x decorative pillow 80 x 50cm 2 x decorative pillow 55 x 55cm</p>	175 x 95
	<p><b>Typ Nr. SO54</b> <b>Sofa 2–seat Arm left</b> 1 x decorative pillow 80 x 50cm 2 x decorative pillow 55 x 55cm</p>	175 x 95
	<p><b>Typ Nr. LO61</b> <b>Longchair Arm right</b> 3 x decorative pillow 55 x 55cm</p>	95 x 170
	<p><b>Typ Nr. LO62</b> <b>Longchair Arm left</b> 3 x decorative pillow 55 x 55cm</p>	95 x 170
	<p><b>Typ Nr. H855</b> <b>Ottoman 80x55</b></p>	80 x 55
	<p><b>Typ Nr. HO80</b> <b>Ottoman 80x80</b></p>	80 x 80
	<p><b>Typ Nr. KO01</b> <b>Combination–Nr.1</b> composed of 2x Sofa 2 Arm left and Ottoman 80x55 2 x decorative pillow 80 x 50cm 4 x decorative pillow 55 x 55cm</p>	270 x 230
	<p><b>Typ Nr. KO02</b> <b>Combination–Nr.2</b> composed of 2x Sofa 2 Arm right and Ottoman 80x55 2 x decorative pillow 80 x 50cm 4 x decorative pillow 55 x 55cm</p>	270 x 230

Extra pillows – see price list pillow

Please indicate seam version.

Please attach a sketch on order.

**Suspension**

High quality belt in seat

**Upholstery**

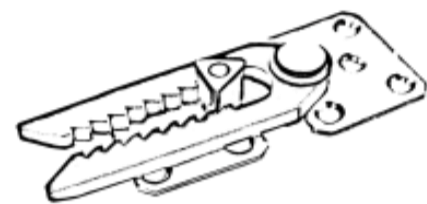
High quality polyether core as a suspension with fleece cover.

**Legs**

Sensitive floors, eg. Wooden floors, etc., we recommend using felt pads.  
The legs are fastened by means of screws or by means of wood screws.  
Special legs can be fixed with wood screws by the customer.

**Connection**

The elements are joined with this fitting.



Standard leg: Metal leg Nr. 17H15cm



Color: – black

Special leg: Metal leg Nr. 42H15 cm



Color: – black  
– alu

Special leg: Metal leg Nr. 46H15cm



Color: – black mat  
– white  
– stainless stel  
– chrom  
– chrom mat

Special leg: Metal leg Nr. 45H15cm



Color: – black mat  
– white  
– stainless stel  
– chrom  
– chrom mat

Special leg: Metal leg Nr. 47H15cm



Color: – chrom

Special leg: Metal leg Nr. 32H15cm



Color: – black  
– chrom

Special leg: Metal leg Nr. 49H15cm



Color: – chrom

Special leg: Wood leg Nr. 59H15cm



Color: – black  
– alu  
– natural  
– d. brown

Special leg: Wood leg Nr. 71H15cm



Color: – black  
– alu  
– natural  
– d. brown